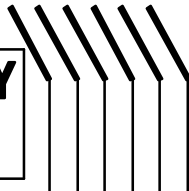


FOR REFERENCE ONLY



**STEWART
CONNECTOR
SYSTEMS, INC.**

R.D. 2, BOX 2020 GLEN ROCK, PENNSYLVANIA 17327

P.N. 937-SP-361010-K3-031
10 X 10 SHIELDED PLUG

CONSISTING OF:

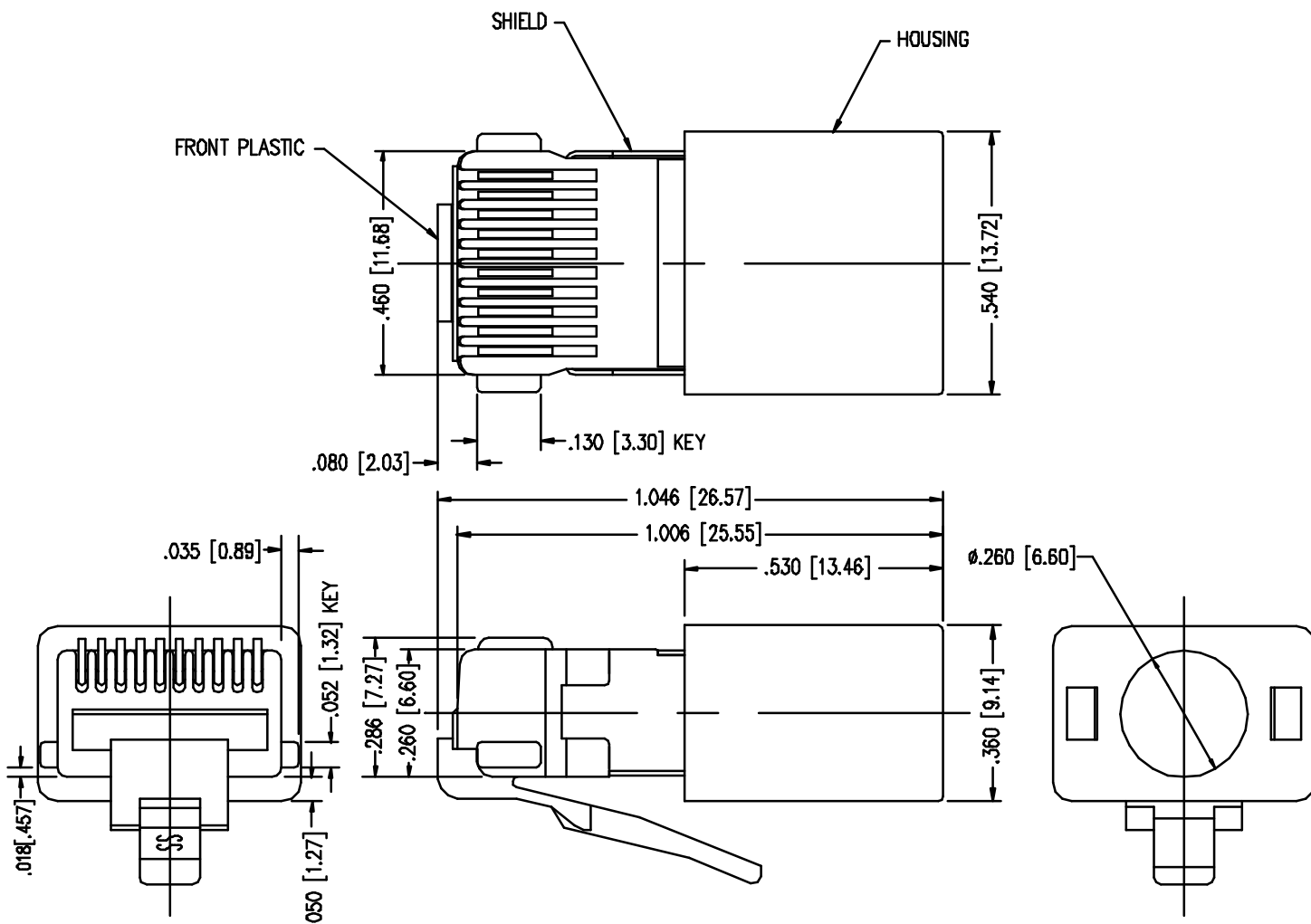
PRE-INSERTED FRONT & SHIELD ASSY.- P.N. 940-SP-361010-K3-FS-031

LOAD BAR- P.N. 361010-LB-031

HOUSING- P.N. 361010-H

FERRULE- P.N. F-235-205-L

CONTACT-SEE NOTE



NOTES:

- TOLERANCES COMPLY WITH F.C.C. DIMENSION REQUIREMENTS.
ALL OTHERS $\pm .003$ [0.08] UNLESS OTHERWISE SPECIFIED.
- DIMENSIONS NOT SHOWN COMPLY WITH F.C.C. REQUIREMENTS
- 937 FOR TINSEL CONDUCTOR